

The logo for SHUNHO CREATIVE is located in the top left corner. It consists of a teal-colored house-shaped icon with the words "SHUNHO" and "CREATIVE" stacked vertically in white, uppercase, sans-serif font.

SHUNHO  
CREATIVE

# SHUNHO CREATIVE

---

P R O D U C T   C A T A L O G

# CATALOGUE



About Shunho



Sustainability



Product



Contact Us



# About Shunho

Shunho Creative is a brand of Shanghai Shunho International, a wholly-owned subsidiary of Shanghai Shunho New Materials Technology, a listed company since 2011. Shunho International is responsible for the import & export of diverse products for its parent company and other subsidiary companies.

Shunho Creative products include whiteboard, laminated paper and the signature plastic-free TransMet® paper produced with vacuum transfer metalizing, laser writing and master plate mock-up technology. The annual productivity of TransMet can reach 200,000 metric tons, most of which are exported to North America, South America, Europe, Southeast Asia and Middle East, making Shunho hold the No.1 market share in the industry.



# Sustainability

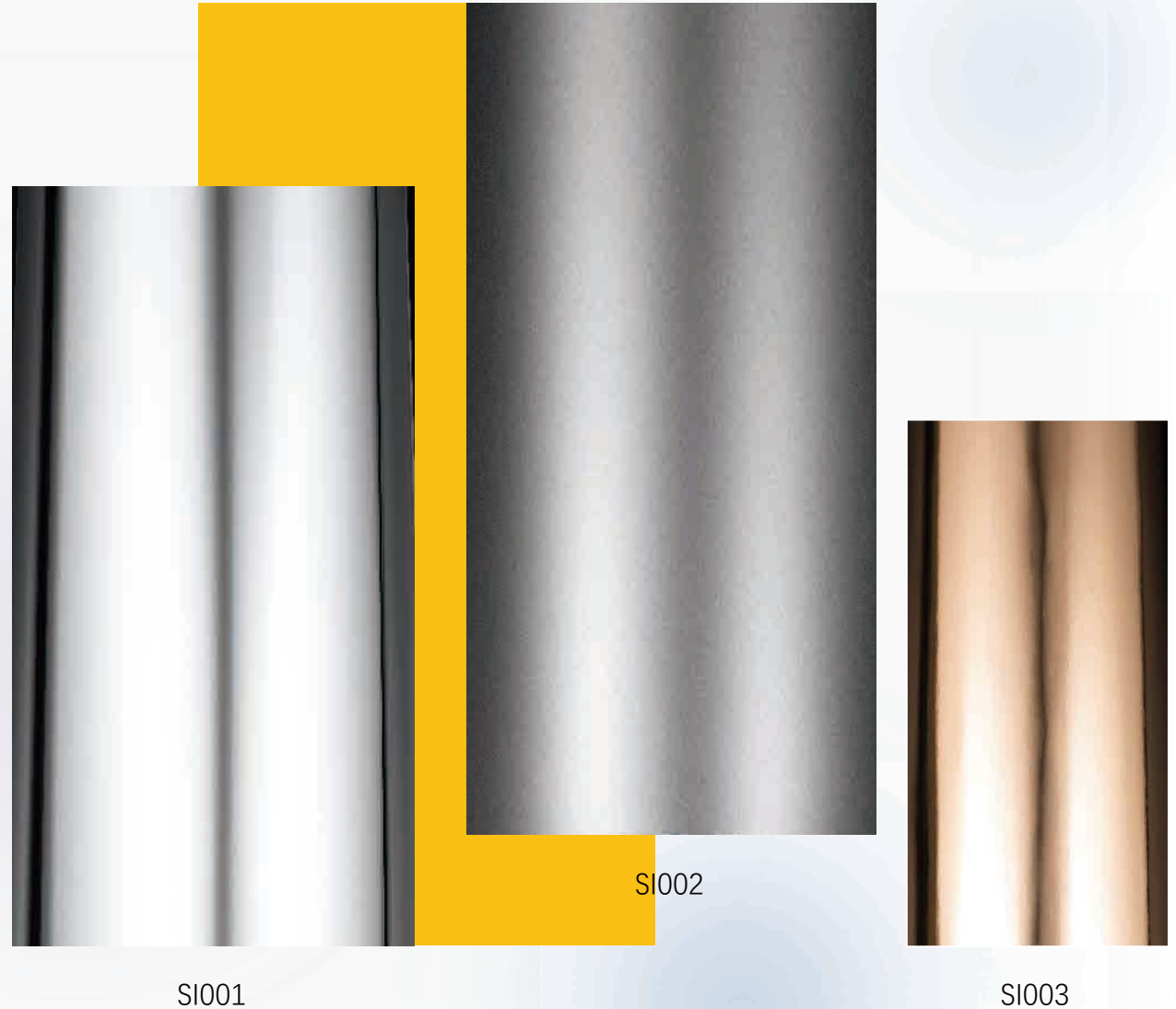


- We are continuously innovating through improving technology and introducing advanced machinery to deliver you TransMet®, a sustainability packaging material and designed meets functionality.
- We aim to be a pioneering supplier of sustainable packaging materials.
- Together we win for the business & environment!

Find more certifications on our website: [www.shunhocreative.com](http://www.shunhocreative.com)

# TransMet® Silver

- TransMet®, the abbreviation of Transfer Metallized; TransMet® Silver is the most basic and widely used metallized paper/paperboard pattern.
- It maybe is your best choice for cost saving to produce a metallic effect of large sizes on packaging comparing with hot stamping.
- It is the best solution of environmental packaging along with fancy metallic looking comparing with film laminations & foil laminations.
- The simple metallic finish presents a high end shiny looking, it makes your packaging different from plain board packaging on the shelf, while it can be easily adapted to most design image.

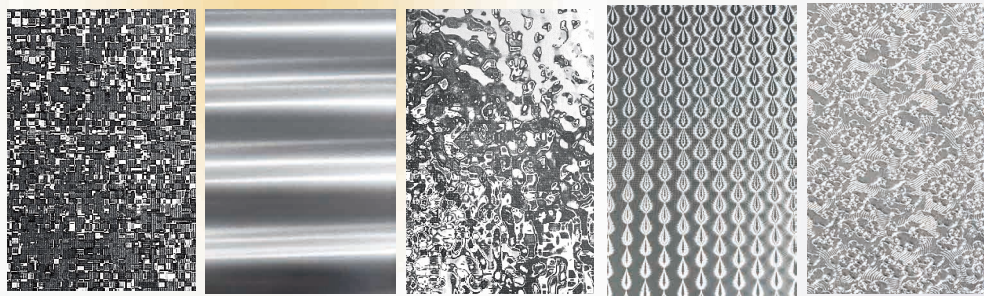




# TransMet® Holographic

“Holographic” is popular in the latest years. It’s an iridescent effect that shifts with the angle of light. As a visual product of technology, holographic is a new element to inspire designers with its expression of future, high-tech and fashion. It gets an increasing favor of consumers for its rainbow-like patterns, irregular gradients and display of youthful vigor.

## ■ *White patterns*

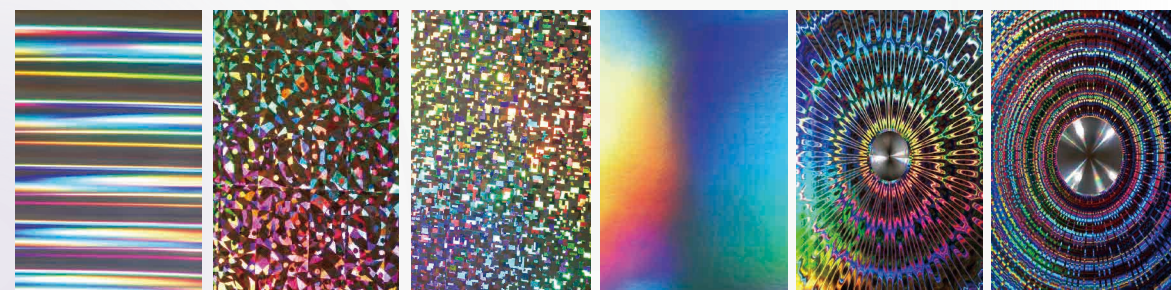


HW-001 HW-002 HW-003 HW-004 HW-005

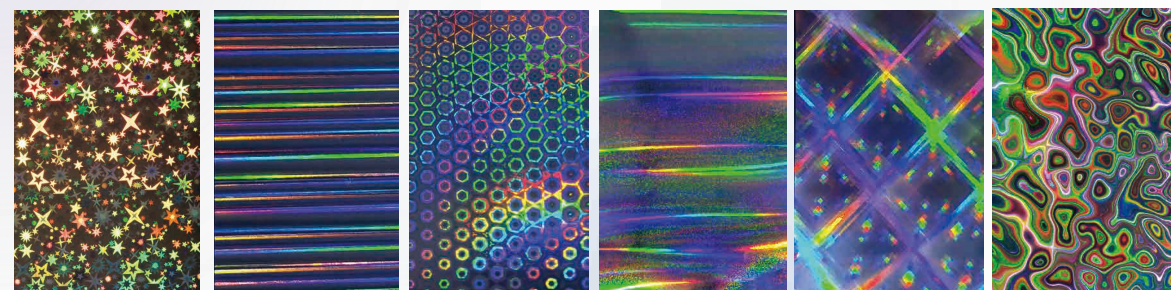


HW-006 HW-007 HW-008 HW-009 HW-010

## ■ *Colorful patterns*



HC-001 HC-002 HC-003 HC-004 HC-005 HC-006



HC-007 HC-008 HC-009 HC-010 HC-011 HC-012



# TransMet® Lens

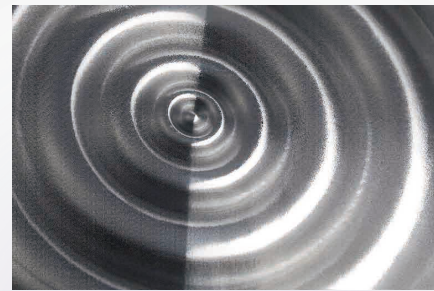
TransMet® Lens gives a strong impression of naked-eye 3D effect. Ordinary lens paper is known with an orbicular shape, but TransMet® Lens is special for its variety of forms.



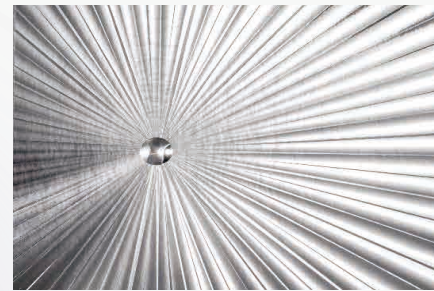
LE-001



LE-002



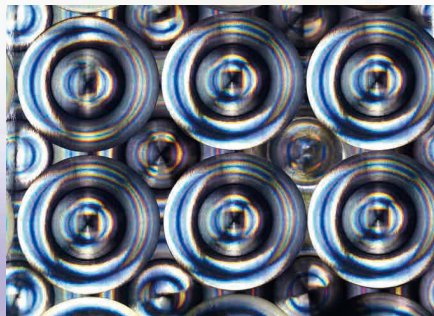
LE-003



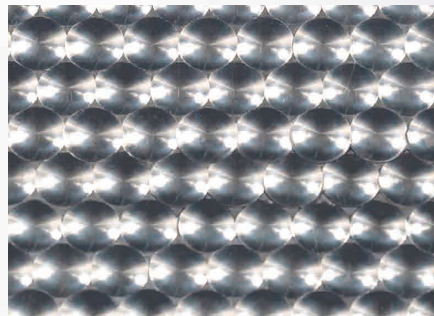
LE-004



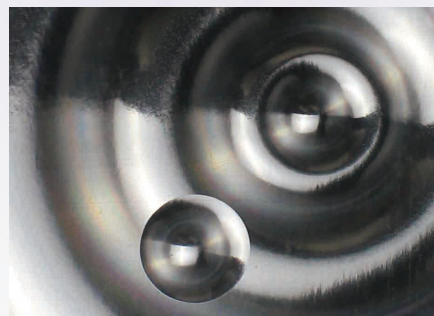
LE-005



LE-006



LE-007



LE-008



LE-009



LE-010



# TransMet® Inspire

TransMet® Inspire is a customization with rich details, metallic finish and lines that give a truly tactile experience. It is not any one pattern of TransMet® Holographic and TransMet® Lens, but could be them all or any other forms, be it naked 3D or flowing effect, as long as a designer can imagine unrestrainedly.



IN-001



IN-002



IN-003



IN-004



IN-005



IN-006



IN-007



IN-008



IN-009

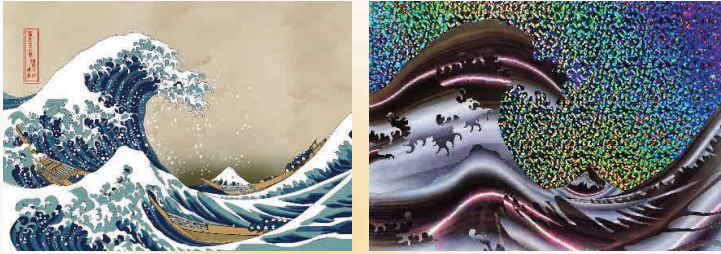


IN-010



# TransMet® Inspire

Before mass production, we could provide mock up in a very short of time. Customers can see what it will look like at the initial stage.

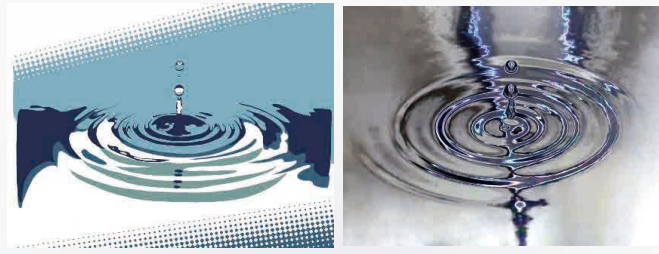


Artwork

Mock up



Printed

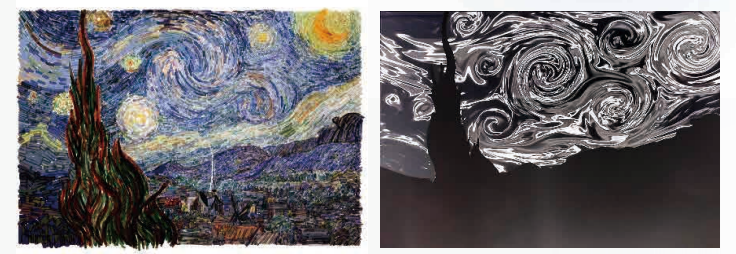


Artwork

Mock up



Printed




Artwork


Mock up





Printed

# Contact Us

 [www.shunhocreative.com](http://www.shunhocreative.com)

 No 200 Zhenchen Road, Putuo District, Shanghai

 [sales@shunhocreative.com](mailto:sales@shunhocreative.com)

 +86 13122520524



WeChat



LinkedIn